

Blood Cells Med Terms Quiz

Question Prompt: 1

Total Points: 1

Mononuclear white blood cells (agranulocyte) formed in lymph tissue, also a phagocyte and a precursor of macrophages are leukocytes.

- True
 False
-

Question Prompt: 2

Total Points: 1

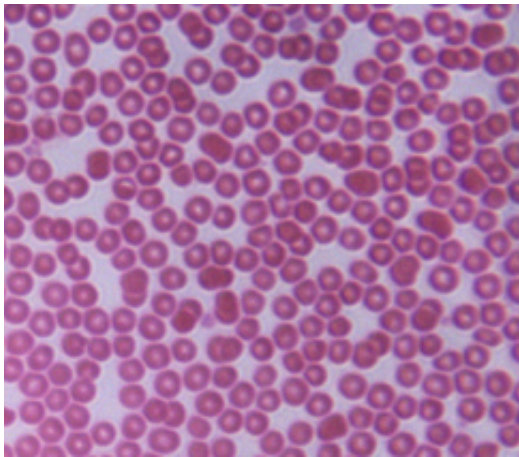
Basophils are leukocytes (granulocytes) with dark staining blue granules, and release histamine and heparin.

- True
 False
-

Question Prompt: 3

Total Points: 1

The Blood cells in the attached image are

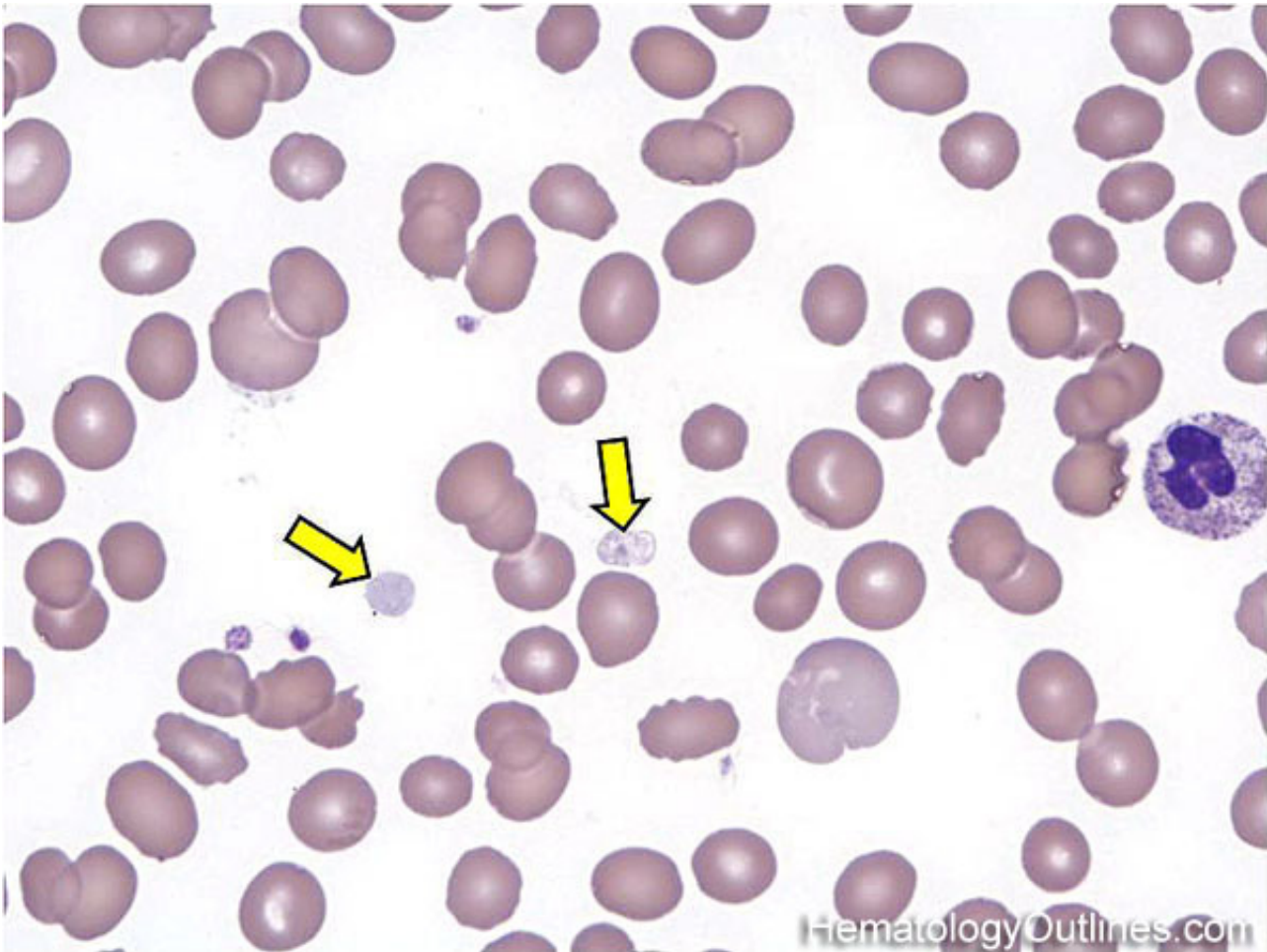


- White blood cells
 red blood cells
 platelets
 monocytes
 none of the above
-

Question Prompt: 4

Total Points: 1

The arrows in the attached image are pointing to

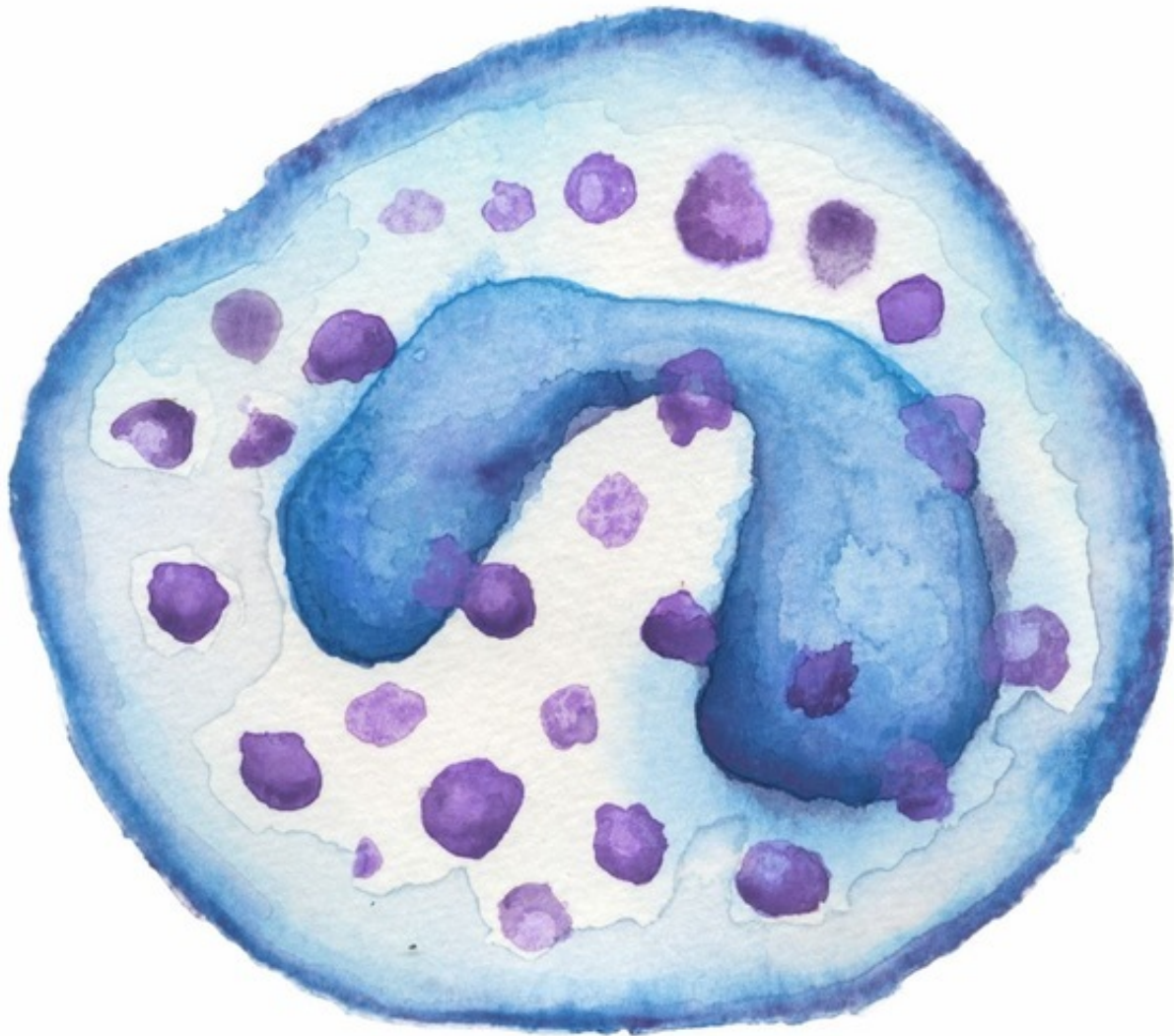


- red blood cells
- white blood cells
- platelets
- leukocytes
- none of the above

Question Prompt: 5

Total Points: 1

The white blood cell in the attached image is a/n

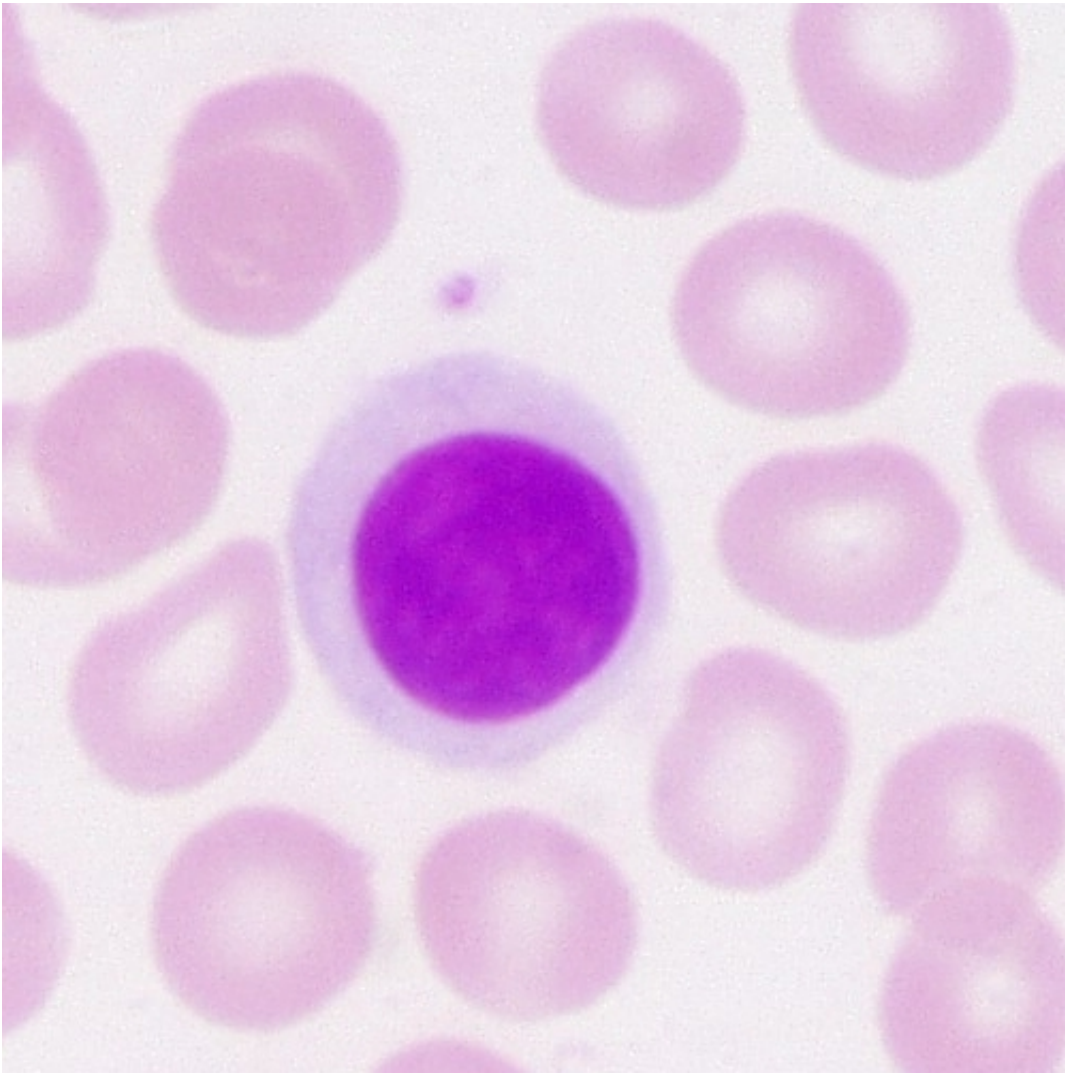


- neutrophils
- basophils
- eosinophils
- lymphocytes
- none of the above

Question Prompt: 6

Total Points: 1

The white blood cell in the attached image is a/n



- basophils
- neutrophils
- monocytes
- lymphocytes
- none of the above

Question Prompt: 7

Total Points: 1

The white blood cell in the attached image is a/n

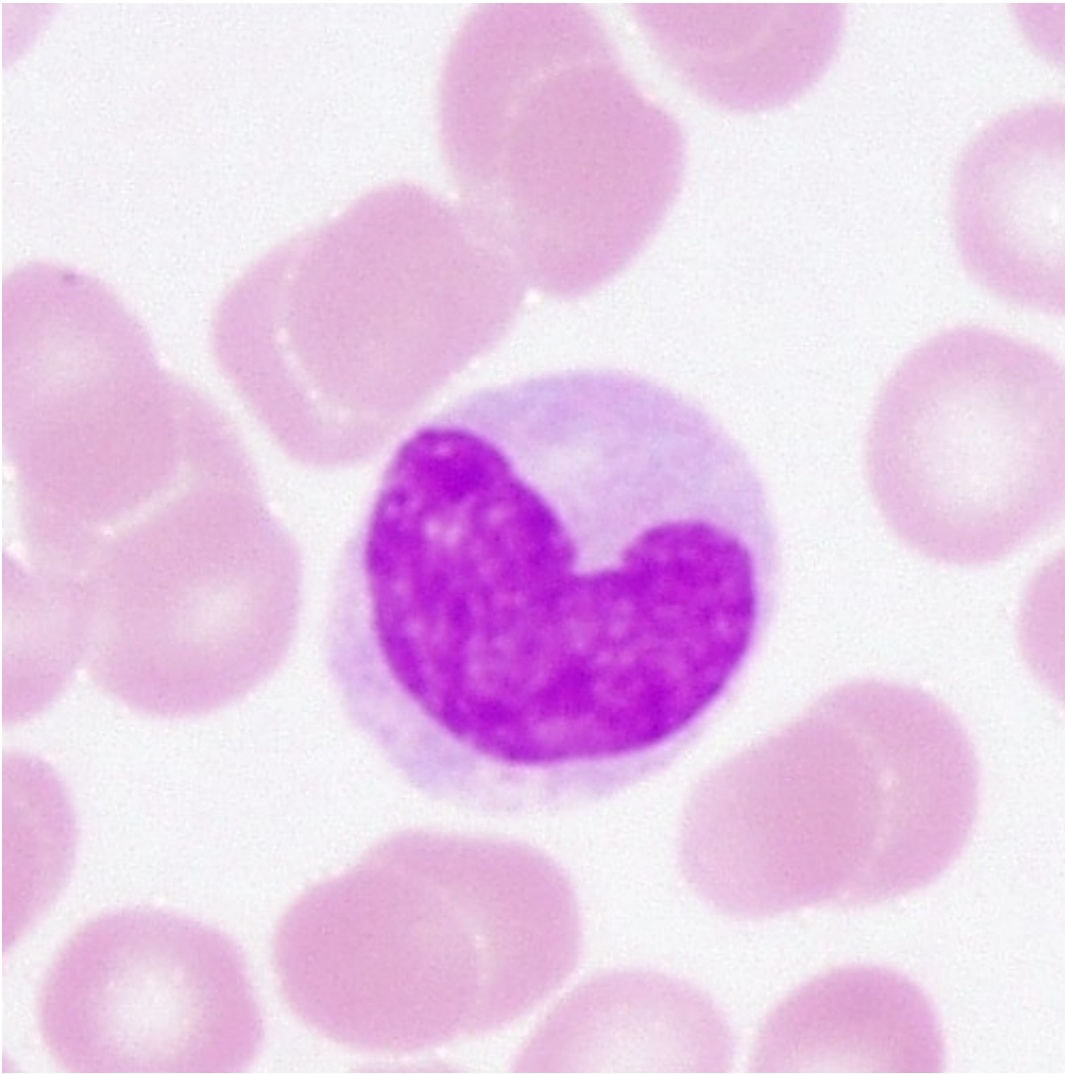


- eosinophils
- basophils
- lymphocytes
- monocytes
- none of the above

Question Prompt: 8

Total Points: 1

The white blood cell in the attached image is a/n

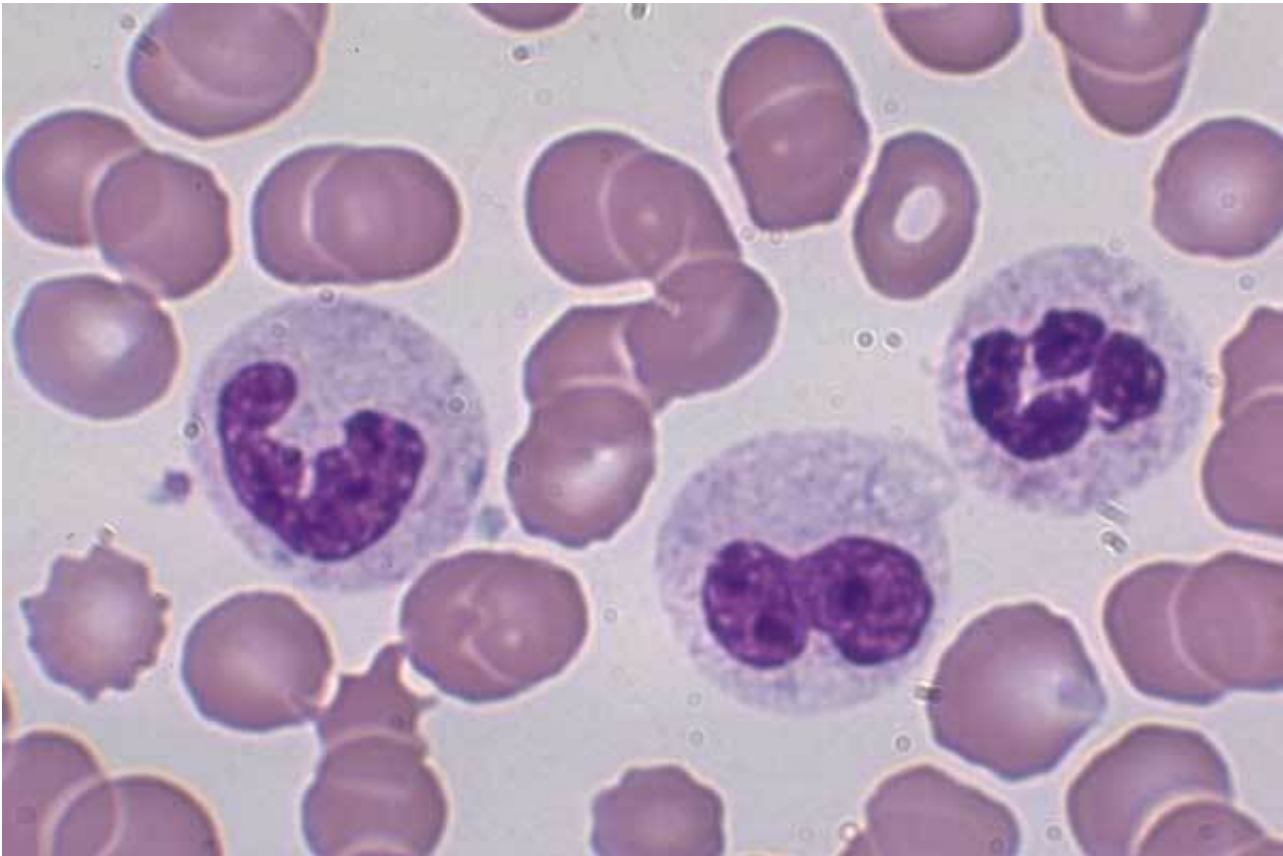


- monocytes
- macrophages
- phagocytes
- neutrophils
- both A and B
- all of the above
- none of the above

Question Prompt: 9

Total Points: 1

The white blood cells in the attached image are



- basophils
 - neutrophils
 - monocytes
 - neutrophils
 - none of the above
-

Question Prompt: 10

Total Points: 1

Thrombocytes that help blood clot are called monocytes.

- True
 - False
-

Question Prompt: 11

Total Points: 1

Leukocytes formed in the bone marrow with granules that do not stain intensely and have a pale color are eosinophils.

- True
 - False
-

Question Prompt: 12

Total Points: 7

Points per answer: 1

Match the WBC on the right with its description on the left

- | | |
|---|----------------|
| A. Mononuclear leukocyte formed in lymph tissue that produces antibodies | 1. platelet |
| B. Leukocyte with dense, reddish granules having an affinity for red acidic dye, associated with allergic reactions | 2. neutrophils |
| C. Red blood cell | 3. monocytes |
| D. Leukocytes formed in the bone marrow with light staining granules and a pale color | 4. lymphocyte |
| E. Leukocytes with dark staining blue granules that release histamine and heparin | 5. basophils |
| F. Mononuclear white blood cells formed in lymph tissue, also a phagocyte and the precursor of macophages | 6. erythrocyte |
| G. Thrombocyte that helps blood clot | 7. eosinophil |
-

Question Prompt: 13

Total Points: 8

Points per answer: 1

Match the description of the blood cell on the left with its name on the right

- | | |
|--|------------------|
| A. Large phagocyte formed from monocytes that destroy and engulf other materials | 1. globulins |
| B. White blood cells with dark staining granules | 2. granulocytes |
| C. Precursor to platelets | 3. plasma |
| D. Cells having one nucleus | 4. macrophage |
| E. Immature red blood cells | 5. erythroblsts |
| F. Plasma proteins in blood | 6. megakaryocyte |
| G. The liquid portion of blood | 7. mononuclear |
| H. the protein on RBC's that carries oxygen. | 8. hemoglobin |
-

Question Prompt: 14

Total Points: 1

Points per answer: 1

The liquid portion of blood is called _____.

Question Prompt: 15

Total Points: 1

Points per answer: 1

Any foreign material that stimulates the production of antibodies is an _____.

Question Prompt: 16

Total Points: 1

Points per answer: 1

A plasma protein that is produced in response to an antigen is an _____.

Question Prompt: 17

Total Points: 1

Alpha, beta, and gamma, are types of antibodies.

- True
 False
-

Question Prompt: 18

Total Points: 1

The hormone _____ stimulates the bone marrow to produce RBC's in a process called _____.

- erythropoiesis, erythropoietin
 hematopoietin, hematopoiesis
 erythropoietin, erythropoiesis
 hematopoiesis, hematopoietin
 none of the above
-

Question Prompt: 19

Total Points: 1

Points per answer: 1

The abbreviation for erythropoietin is _____

Question Prompt: 20

Total Points: 1

Points per answer: 1

the abbreviation for the bloods hematocrit is _____

Question Prompt: 21

Total Points: 4

Points per answer: 1

Match the description on the left with its term on the right

- | | |
|--|------------------|
| A. Cells that eat or swallow other cells | 1. phagocyte |
| B. Immature monocytes | 2. monoblast |
| C. Separation of blood to find the percentage of blood cells in relation to blood volume | 3. hematocrit |
| D. Formation of blood | 4. hematopoiesis |
-

Question Prompt: 22

Total Points: 4

Name four types of plasm proteins

Question Prompt: 23

Total Points: 1

Globulins are separated int three different types. Give at least one example of a blood protein (globulin).
