

ORGANS OF THE DIGESTIVE SYSTEM

PART A

Match the terms in column A with the descriptions in column B. Place the letter of your choice in the space provided.

Column A

- a. Adenoids (pharyngeal tonsils)
- b. Amylase
- c. Crown
- d. Dentin
- e. Frenulum
- f. Incisor
- g. Molar
- h. Oral cavity
- i. Palate
- j. Papillae
- k. Periodontal ligament
- l. Serous cell
- m. Sublingual gland
- n. Uvula
- o. Vestibule

Column B

- _____ 1. Bonelike substance beneath tooth enamel
- _____ 2. Smallest of major salivary glands
- _____ 3. Tooth specialized for grinding
- _____ 4. Chamber between tongue and palate
- _____ 5. Projections on tongue surface
- _____ 6. Cone-shaped projection of soft palate
- _____ 7. Secretes the digestive enzymes in saliva
- _____ 8. Attaches tooth to jaw
- _____ 9. Chisel-shaped tooth
- _____ 10. Roof of oral cavity
- _____ 11. Space between the teeth, cheeks, and lips
- _____ 12. Anchors tongue to floor of mouth
- _____ 13. Lymphatic tissue in posterior wall of pharynx near auditory tubes
- _____ 14. Portion of tooth projecting beyond gum
- _____ 15. Splits starch into disaccharides

Figure 41.1 Label the major features of the mouth.

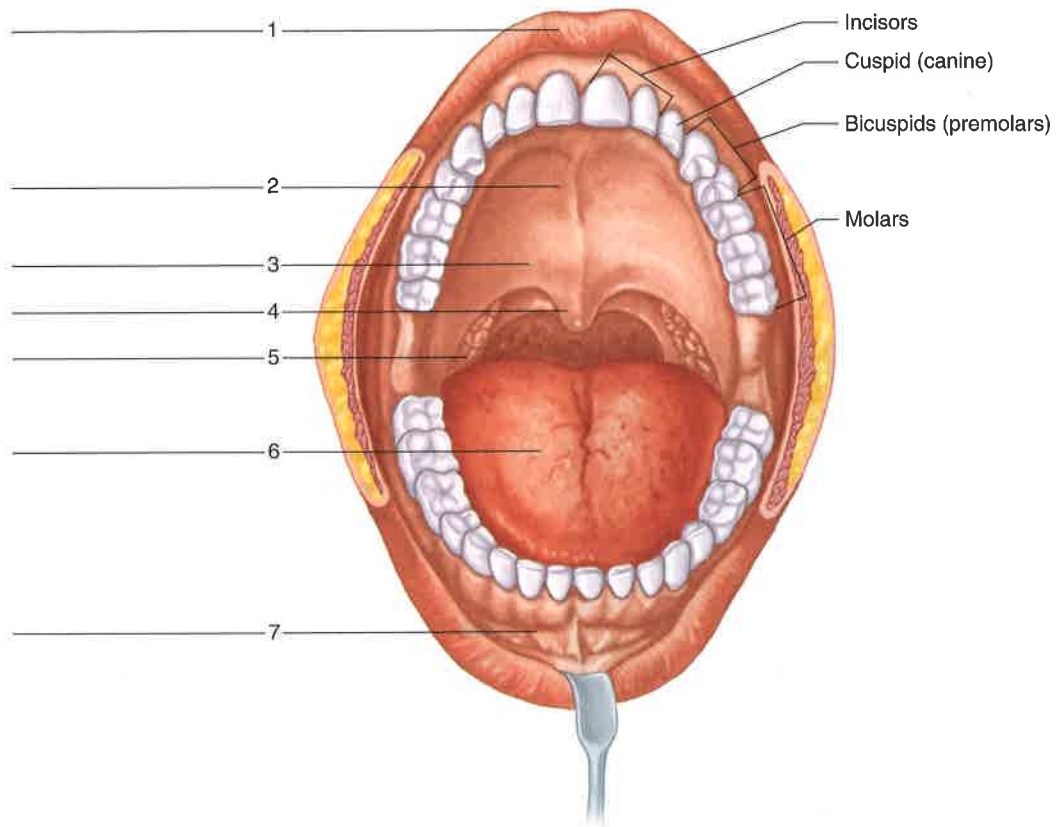


Figure 41.2 Label the features associated with the major salivary glands.

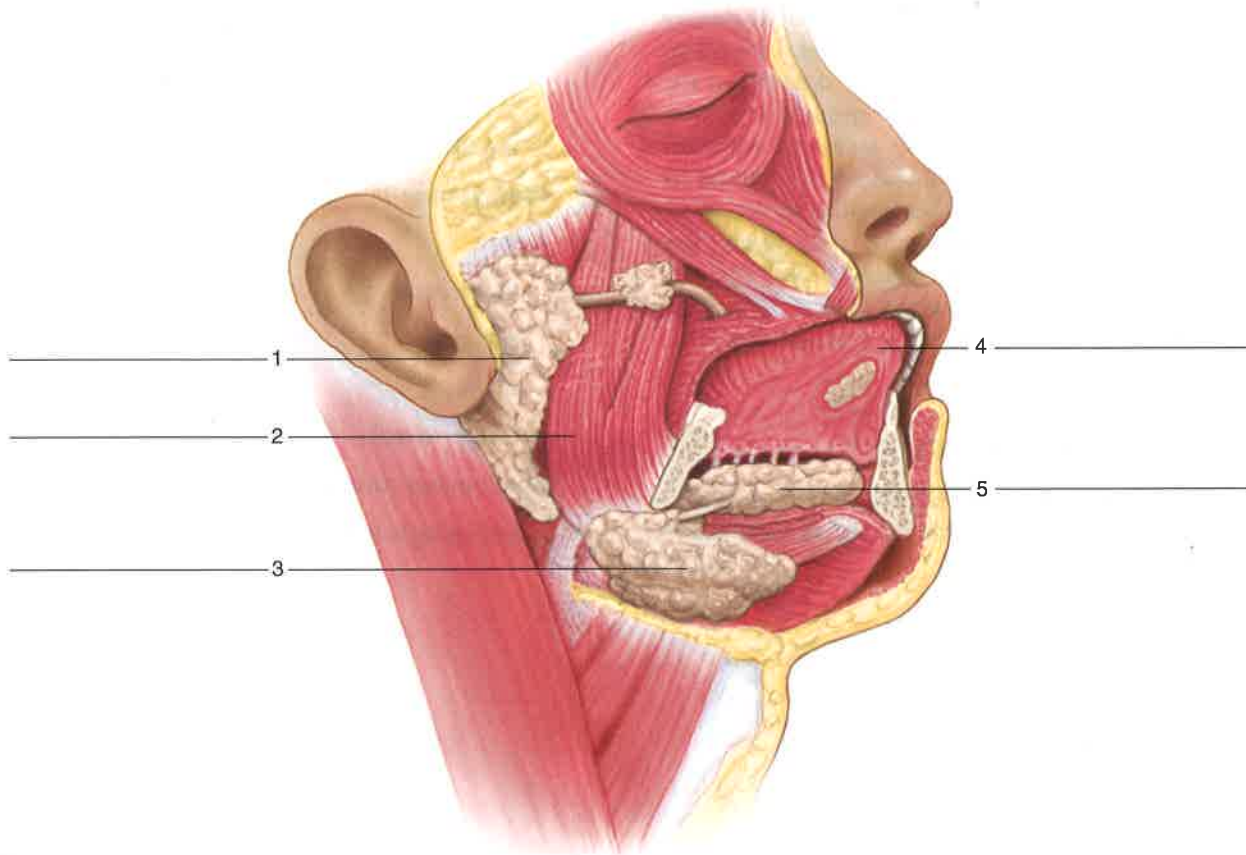


Figure 41.4 Micrograph of the parotid salivary gland (300×).

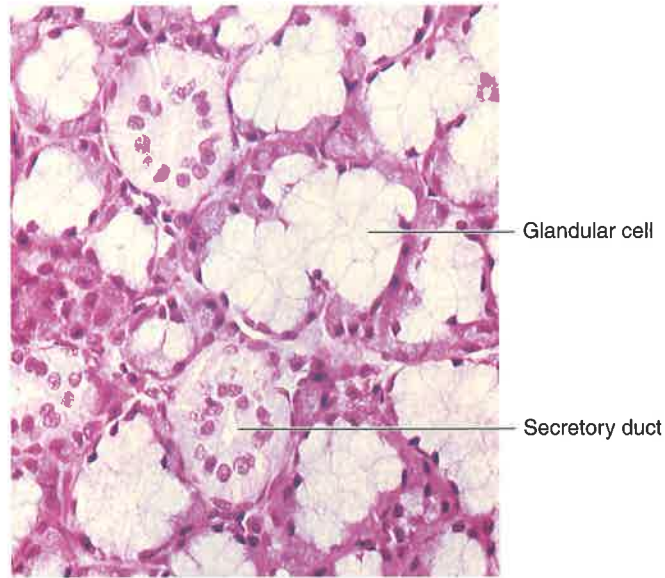


Figure 41.5 Label the features associated with the pharynx.

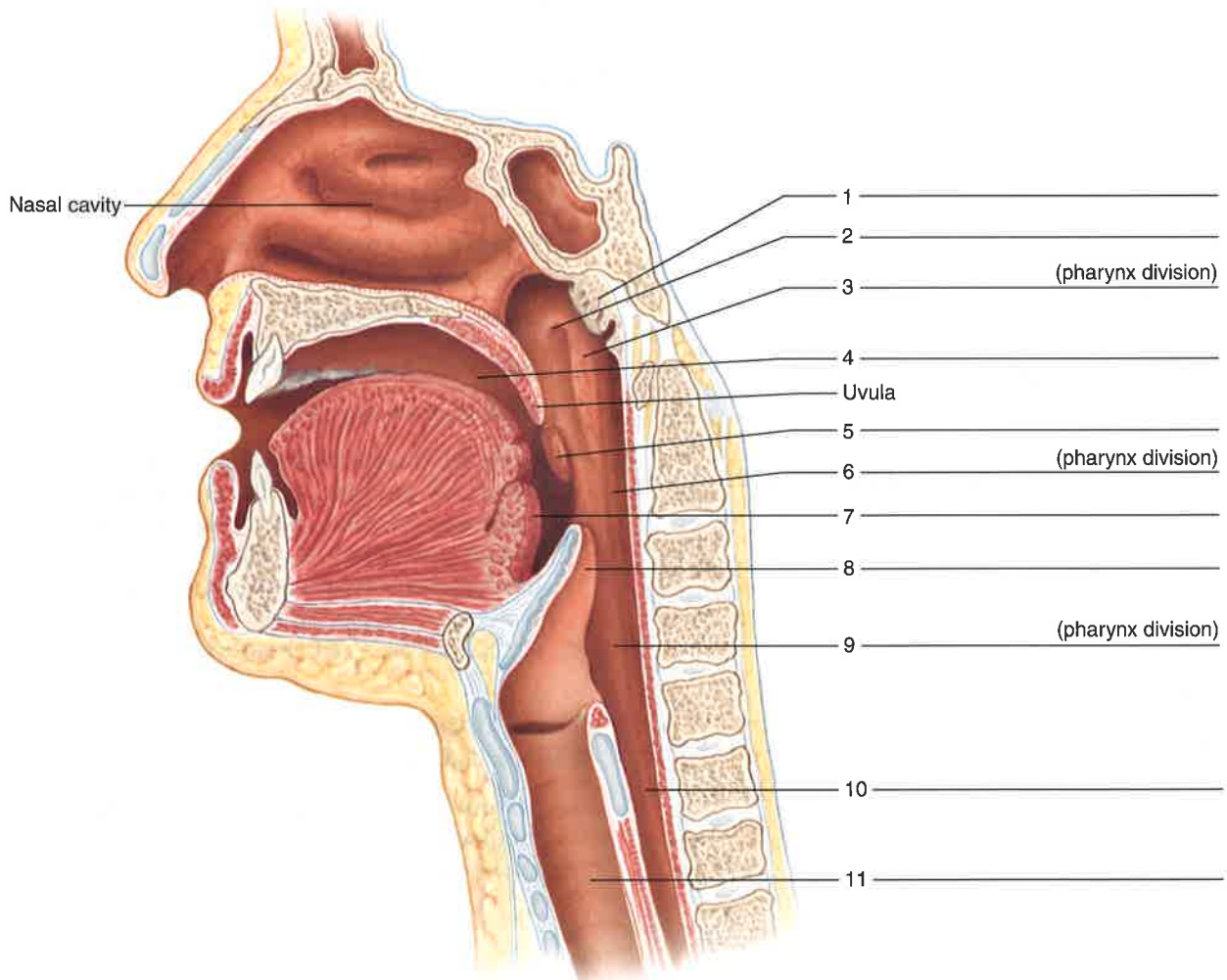


Figure 41.6 Label the major regions of the stomach and associated structures.

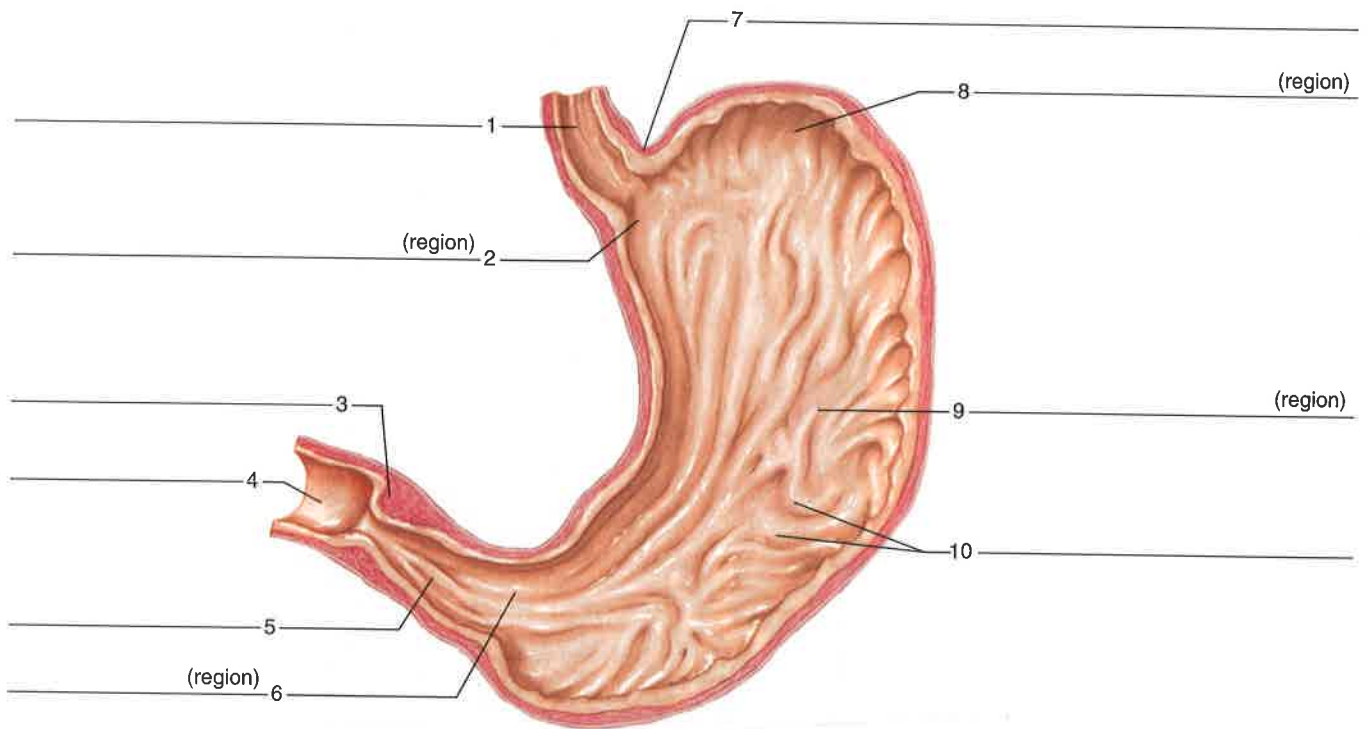


Figure 41.9 Label the features associated with the liver and pancreas.

