

Reference Plates

THE HUMAN ORGANISM

The series of illustrations that follows shows the major parts of the human torso. The first plate illustrates the anterior surface and reveals the superficial muscles on one side. Each subsequent plate exposes deeper organs, including those in the thoracic, abdominal, and pelvic cavities.

Chapters 6–19 of this textbook describe the organ systems of the human organism in detail. As you read them, refer to these plates to visualize the locations of various organs and the three-dimensional relationships among them.

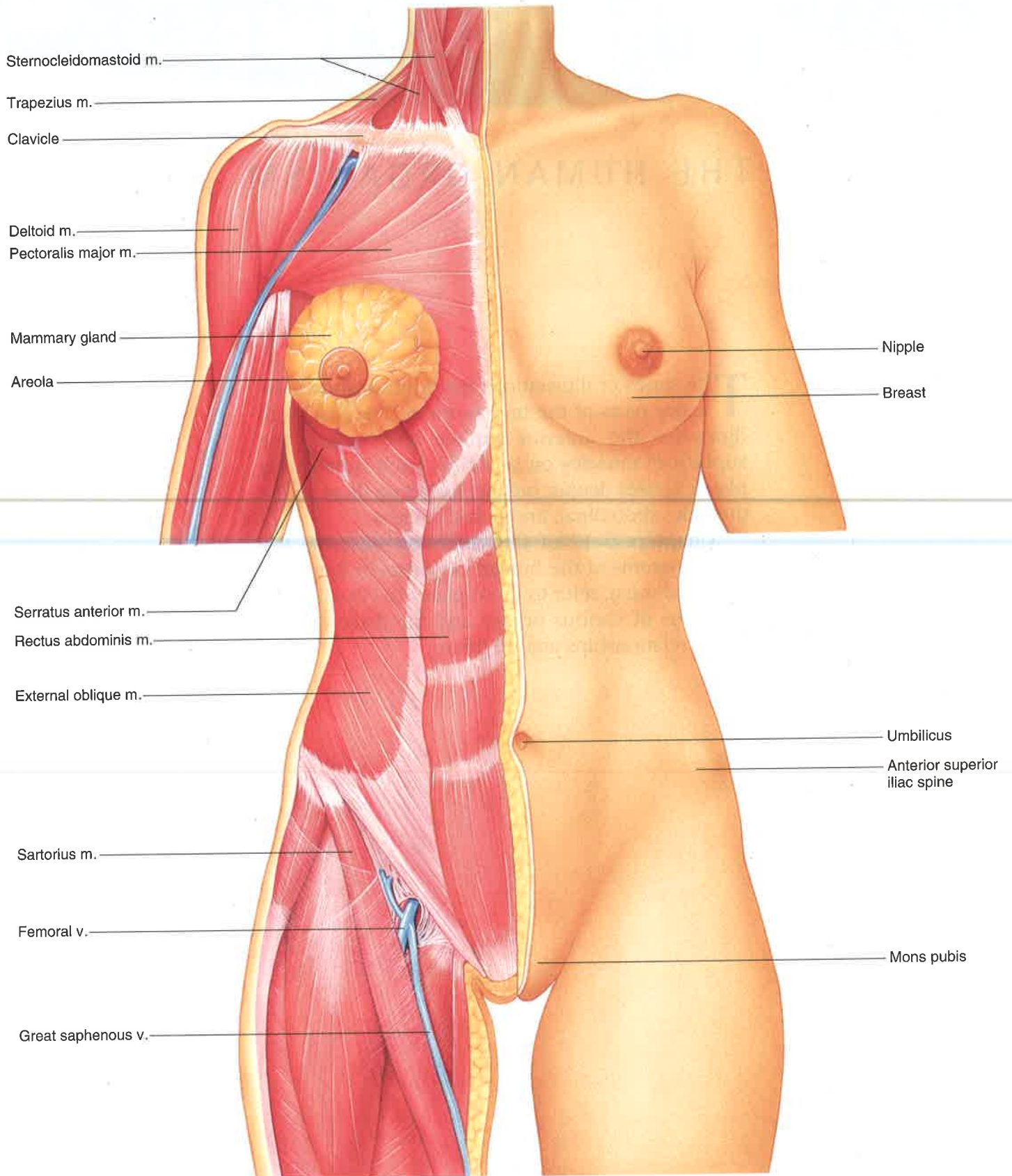


PLATE 1

Human female torso showing the anterior surface on one side and the superficial muscles exposed on the other side. (*m.* stands for *muscle*, and *v.* stands for *vein*.)

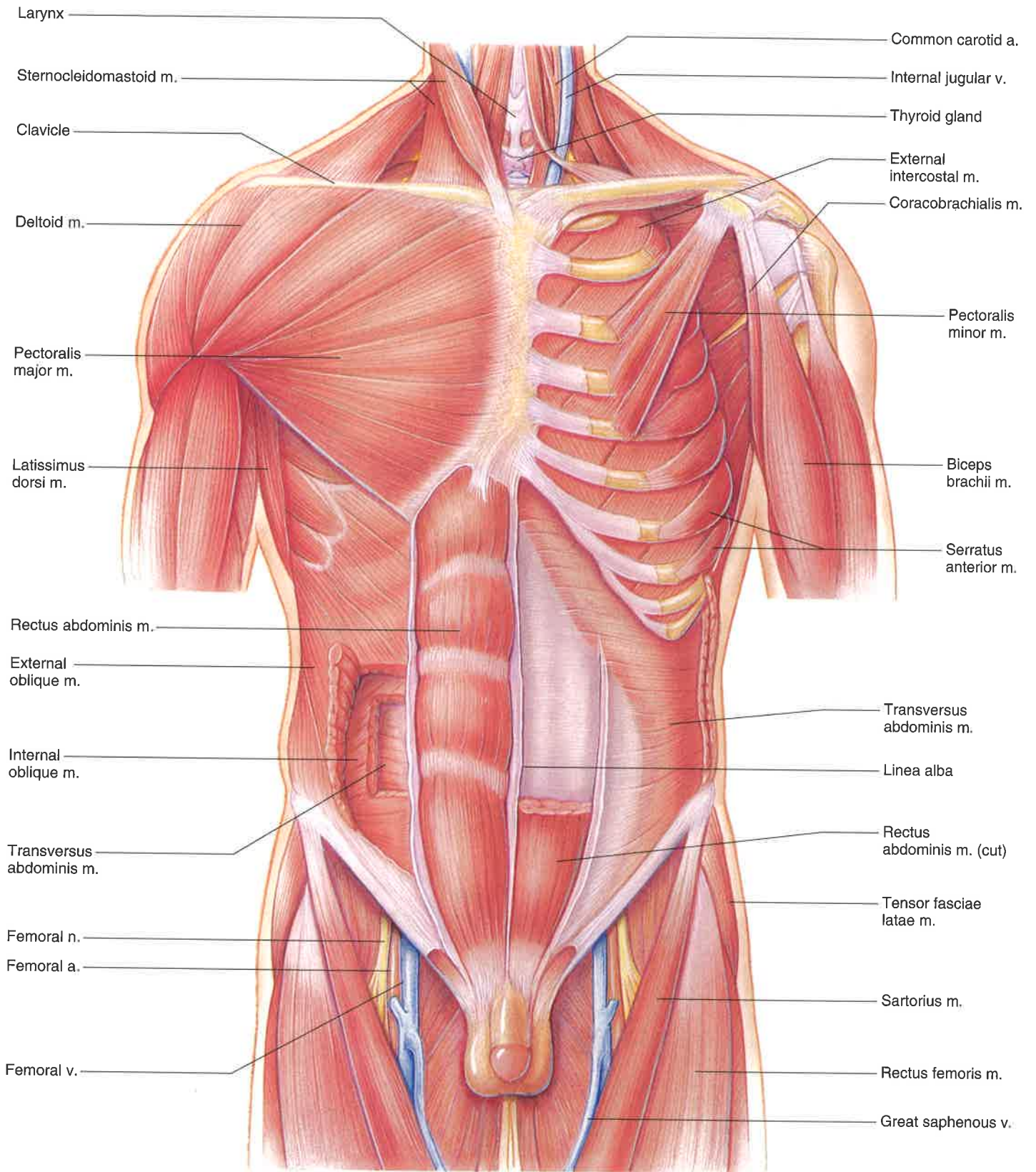


PLATE 2

Human male torso with the deeper muscle layers exposed. (*n.* stands for *nerve*, and *a.* stands for *artery*.)

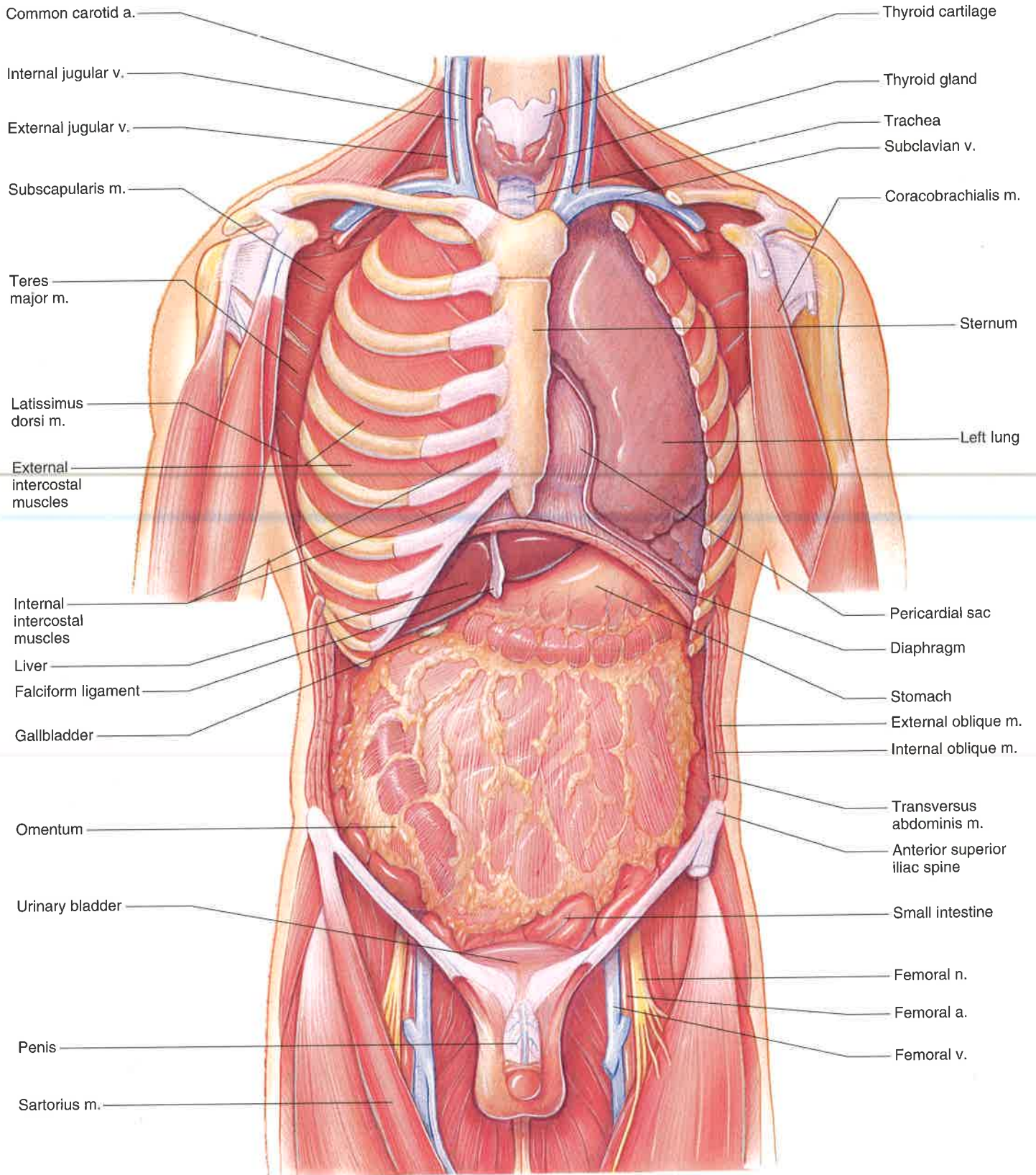


PLATE 3

Human male torso with the deep muscles removed and the abdominal viscera exposed.

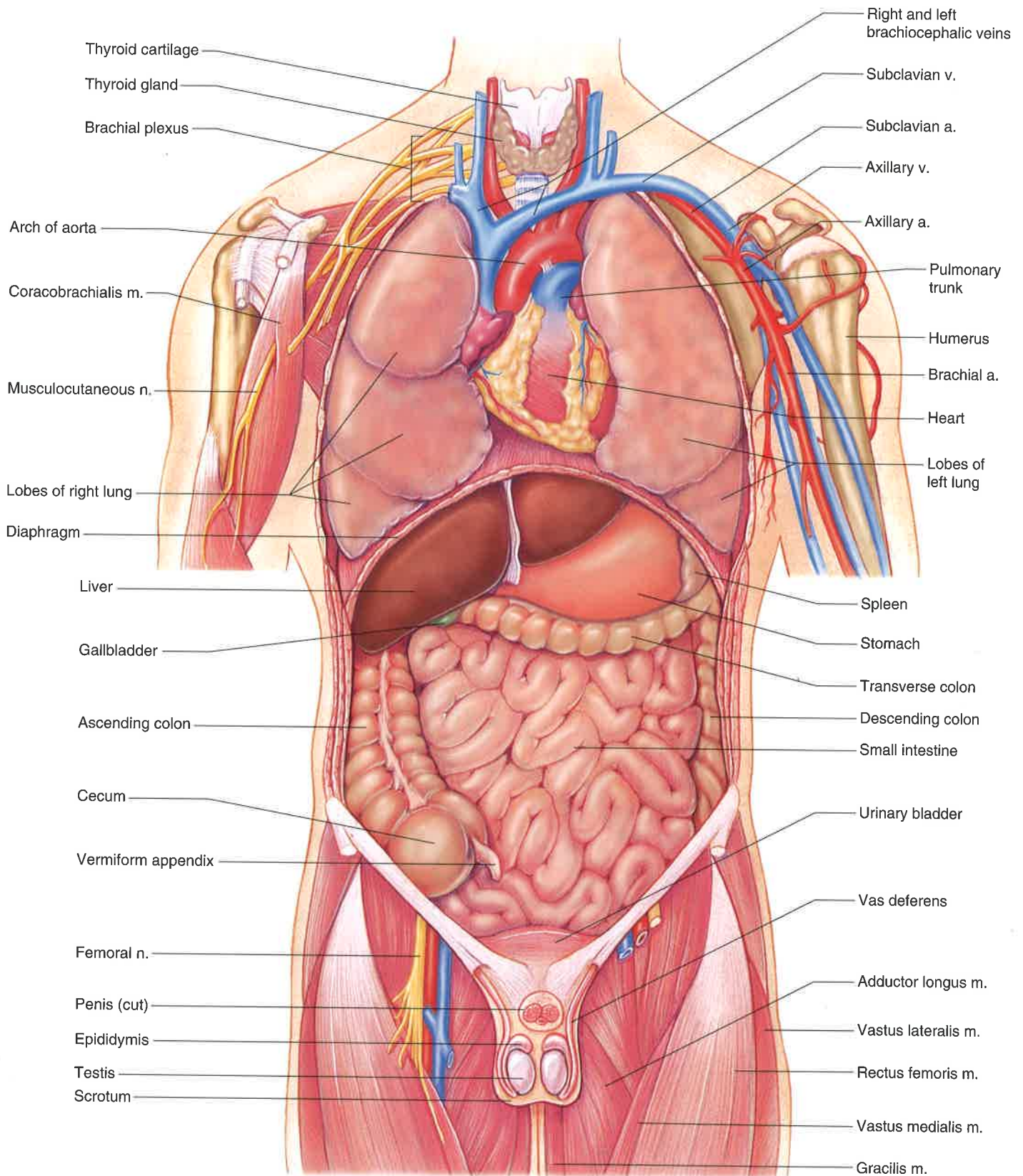


PLATE 4

Human male torso with the thoracic and abdominal viscera exposed.

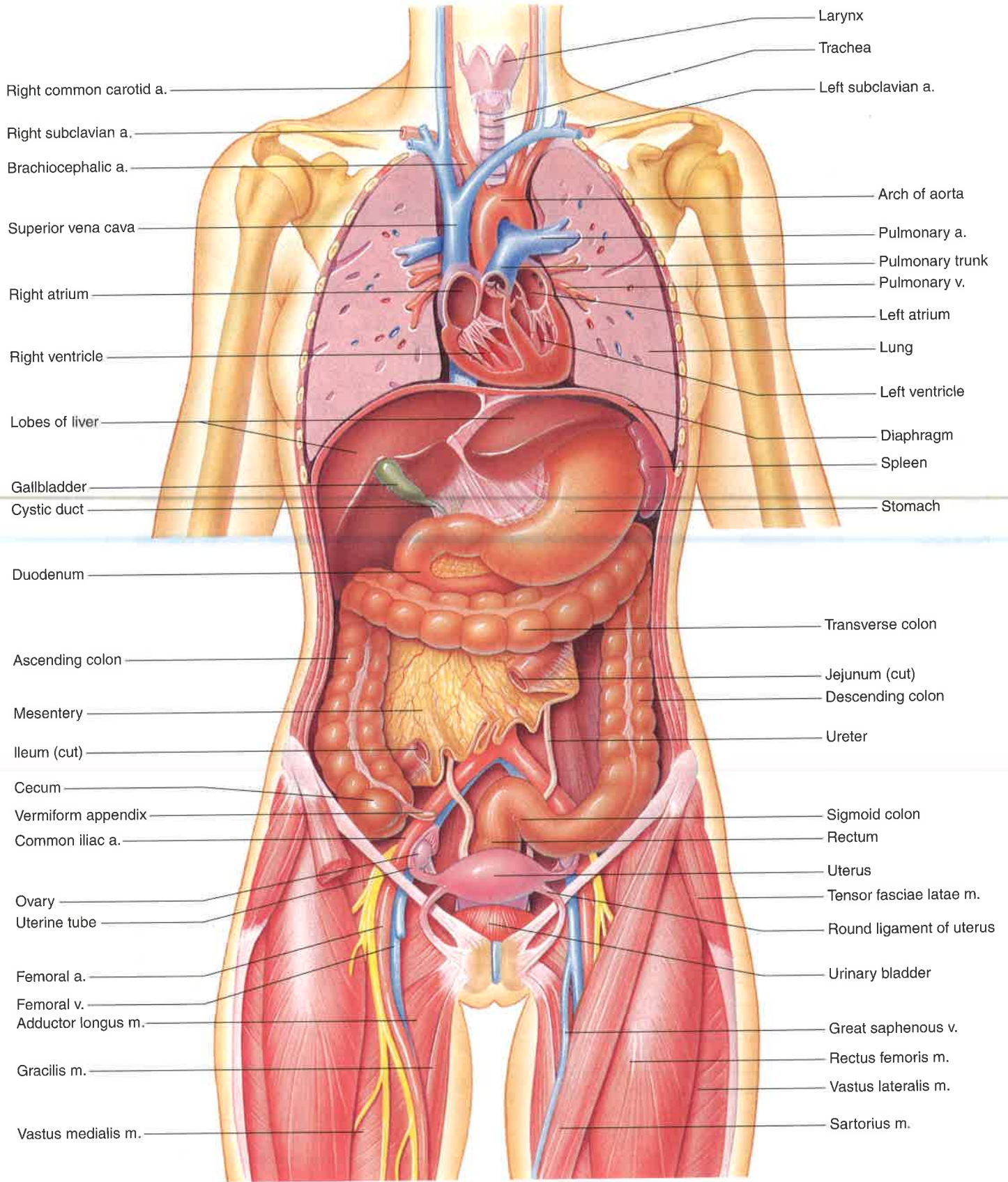


PLATE 5

Human female torso with the lungs, heart, and small intestine sectioned.

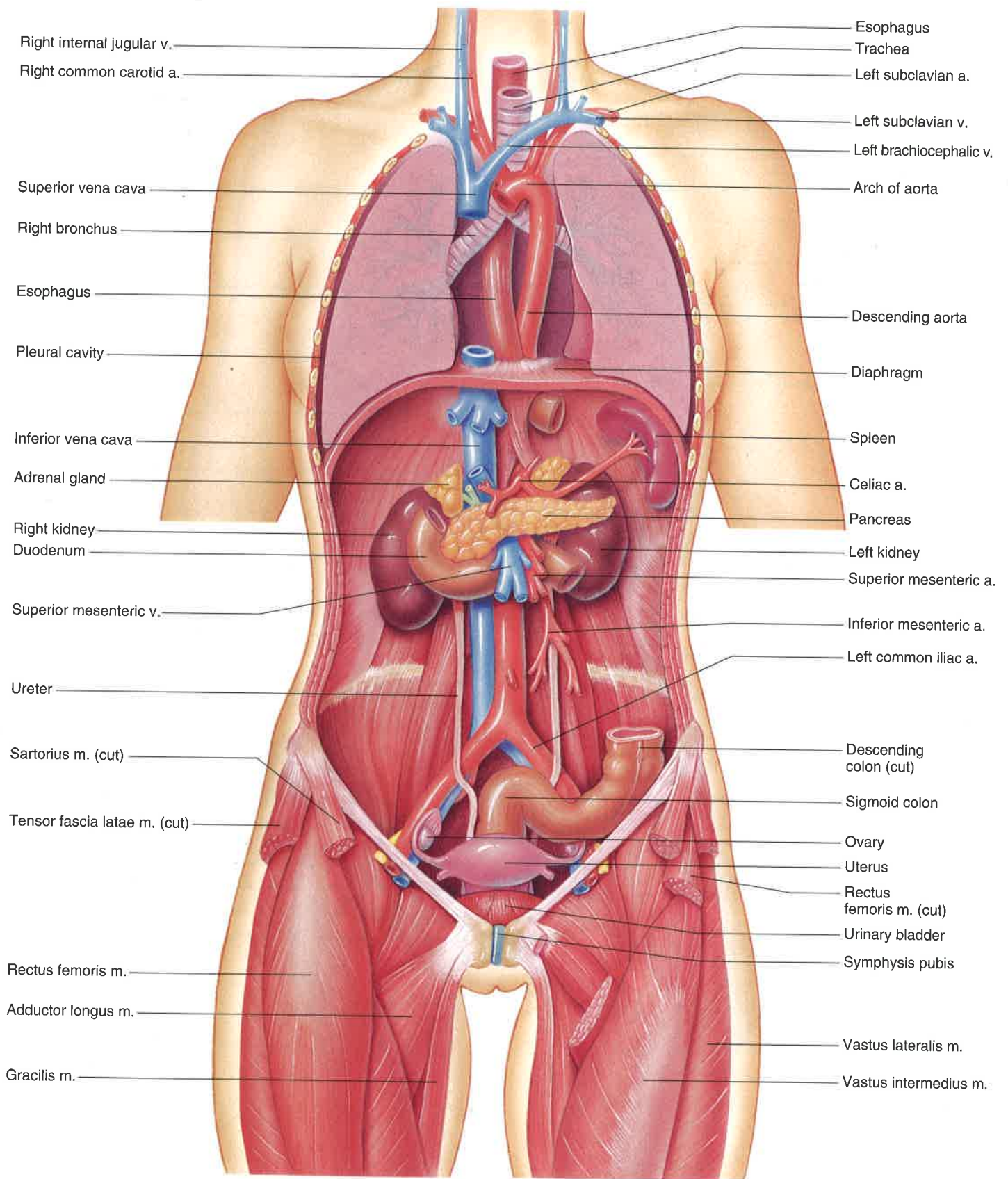


PLATE 6

Human female torso with the heart, stomach, liver, and parts of the intestine and lungs removed.

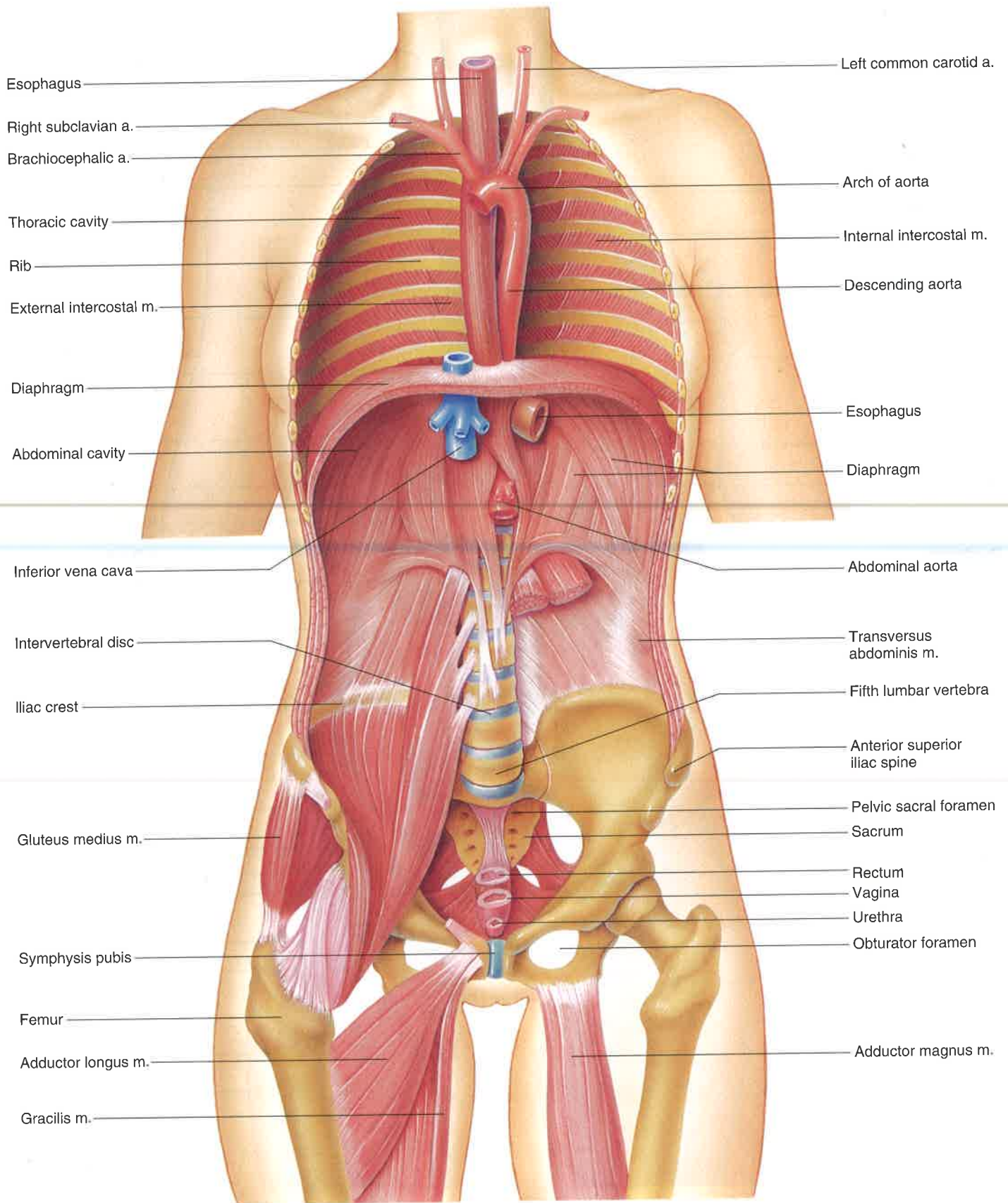


PLATE 7

Human female torso with the thoracic, abdominal, and pelvic viscera removed.